

Ref. No.:

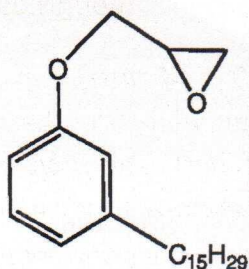
ESSPY-RD-250

Date :

Description:

Esspy-RD-250 is a light brown colored, low viscosity mono functional reactive diluents based on cashew nut shell liquid. It is intended for use as reactive diluents for high viscosity epoxy resins. Due to its low viscosity, excellent miscibility with DGEBA, polar aromatic character, it is preferred as a reactive diluents of epoxy resins especially for those application where special properties after curing like high chemical resistance and moisture resistance required.

Chemicalstructure:



Advantages:

- Reduces viscosity while maintaining most cured properties.
- Improves wetting and process ability.
- Improves low temperature curing and moisture resistance.
- Practically no reduction of hardness.
- High resistance to solvents and ammonia.

Application:

- Civil Engineering and Flooring
- Structural adhesives.
- FRP Composites.
- Protective coating.

Ref. No.:

Date :

TypicalData:

Property	Unit	Test Method	Values
Appearance	--	Visual	Yellow to brown Liquid
Color	GS	ASTM D 1544	Max. 13
Epoxy Value	Eq/Kg.	ASTM D 1652	1.80-2.40
Epoxy Equivalent Weight (EEW)	g/eq	ASTM D 1652	417-556
Viscosity at 25 ⁰ C	mPas	ASTM D 2196	40-70
Hydrolysable Chlorine	%	ASTM D 1726	Max. 1.00

StorageandHandling:

Esspy-RD-250 should be stored in cool and dry place, preferably in the sealed container and should not be exposed to direct sunlight. Esspy-RD-250 has a shelf life of two years if stored in its original container between 2 - 40⁰C away from humidity and excessive heat. Esspy-RD-250 may cause pronounced skin irritation therefore rubber gloves, eye protection creams and breathing mask are recommended. Please refer MSDS for details safety instruction.

Note:

Handle with care. Before and during use, observe all safety labels on packaging and paint containers, consult Material Safety Data Sheets and follow all local or national safety regulations. Avoid inhalation, avoid contact with skin and eyes, and do not swallow. Take precautions against possible risks of fire or explosions as well as protection of the environment. Apply only in well ventilated areas.